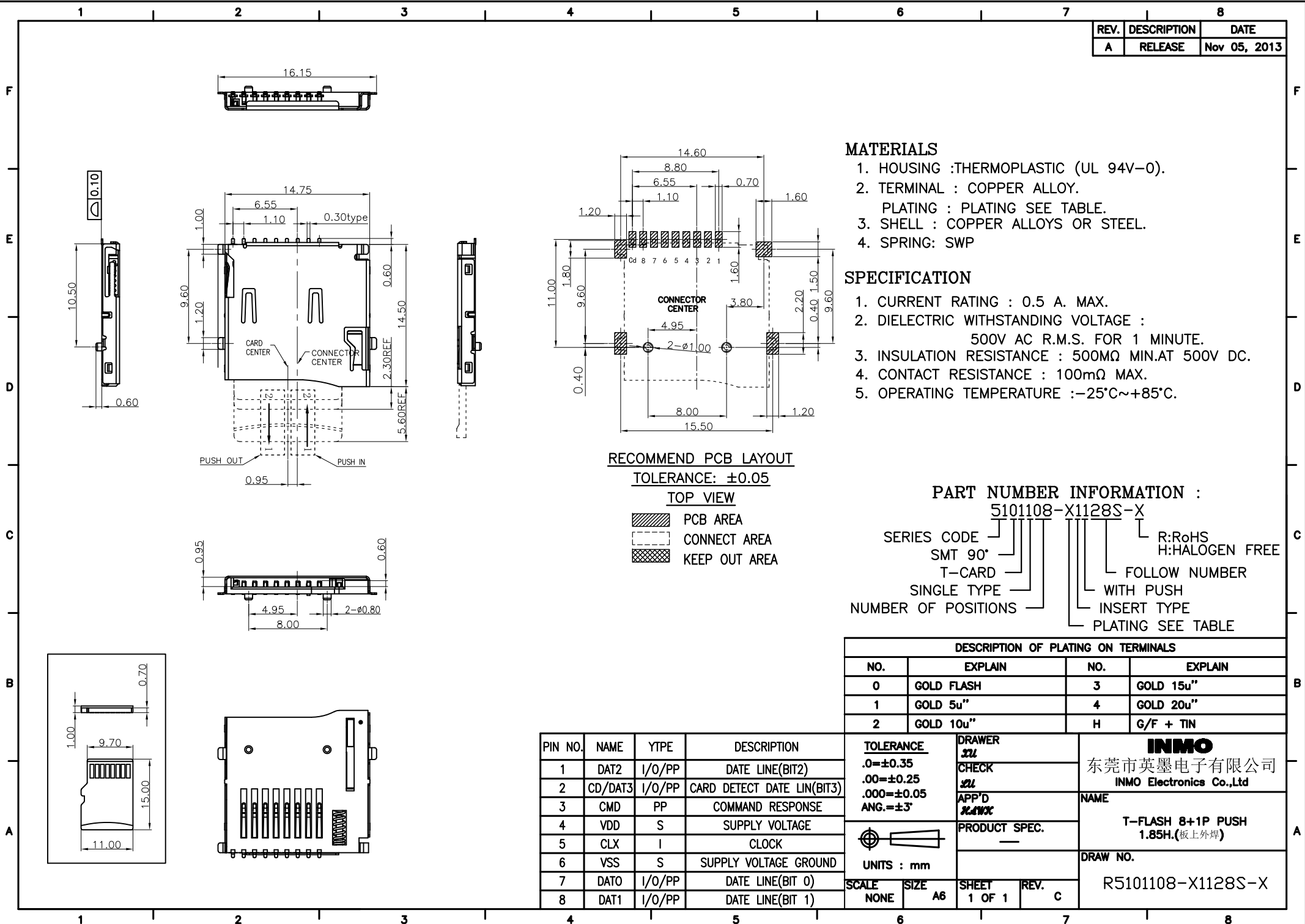


REV.	DESCRIPTION	DATE
A	RELEASE	Nov 05, 2013



MATERIALS

1. HOUSING :THERMOPLASTIC (UL 94V-0).
2. TERMINAL : COPPER ALLOY.
PLATING : PLATING SEE TABLE.
3. SHELL : COPPER ALLOYS OR STEEL.
4. SPRING: SWP

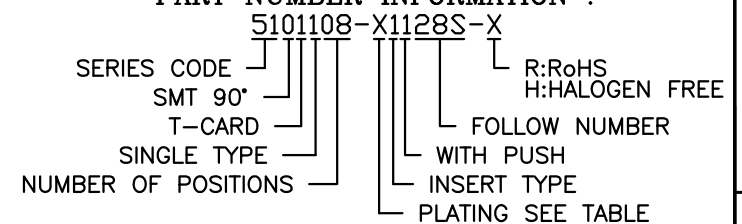
SPECIFICATION

1. CURRENT RATING : 0.5 A. MAX.
2. DIELECTRIC WITHSTANDING VOLTAGE :
500V AC R.M.S. FOR 1 MINUTE.
3. INSULATION RESISTANCE : 500MΩ MIN.AT 500V DC.
4. CONTACT RESISTANCE : 100mΩ MAX.
5. OPERATING TEMPERATURE :-25°C~+85°C.

RECOMMEND PCB LAYOUT
TOLERANCE: ±0.05

- TOP VIEW**
- PCB AREA
 - CONNECT AREA
 - KEEP OUT AREA

PART NUMBER INFORMATION :



DESCRIPTION OF PLATING ON TERMINALS			
NO.	EXPLAIN	NO.	EXPLAIN
0	GOLD FLASH	3	GOLD 15u"
1	GOLD 5u"	4	GOLD 20u"
2	GOLD 10u"	H	G/F + TIN

PIN NO.	NAME	YTPPE	DESCRIPTION
1	DAT2	I/O/PP	DATE LINE(BIT2)
2	CD/DAT3	I/O/PP	CARD DETECT DATE LIN(BIT3)
3	CMD	PP	COMMAND RESPONSE
4	VDD	S	SUPPLY VOLTAGE
5	CLX	I	CLOCK
6	VSS	S	SUPPLY VOLTAGE GROUND
7	DAT0	I/O/PP	DATE LINE(BIT 0)
8	DAT1	I/O/PP	DATE LINE(BIT 1)

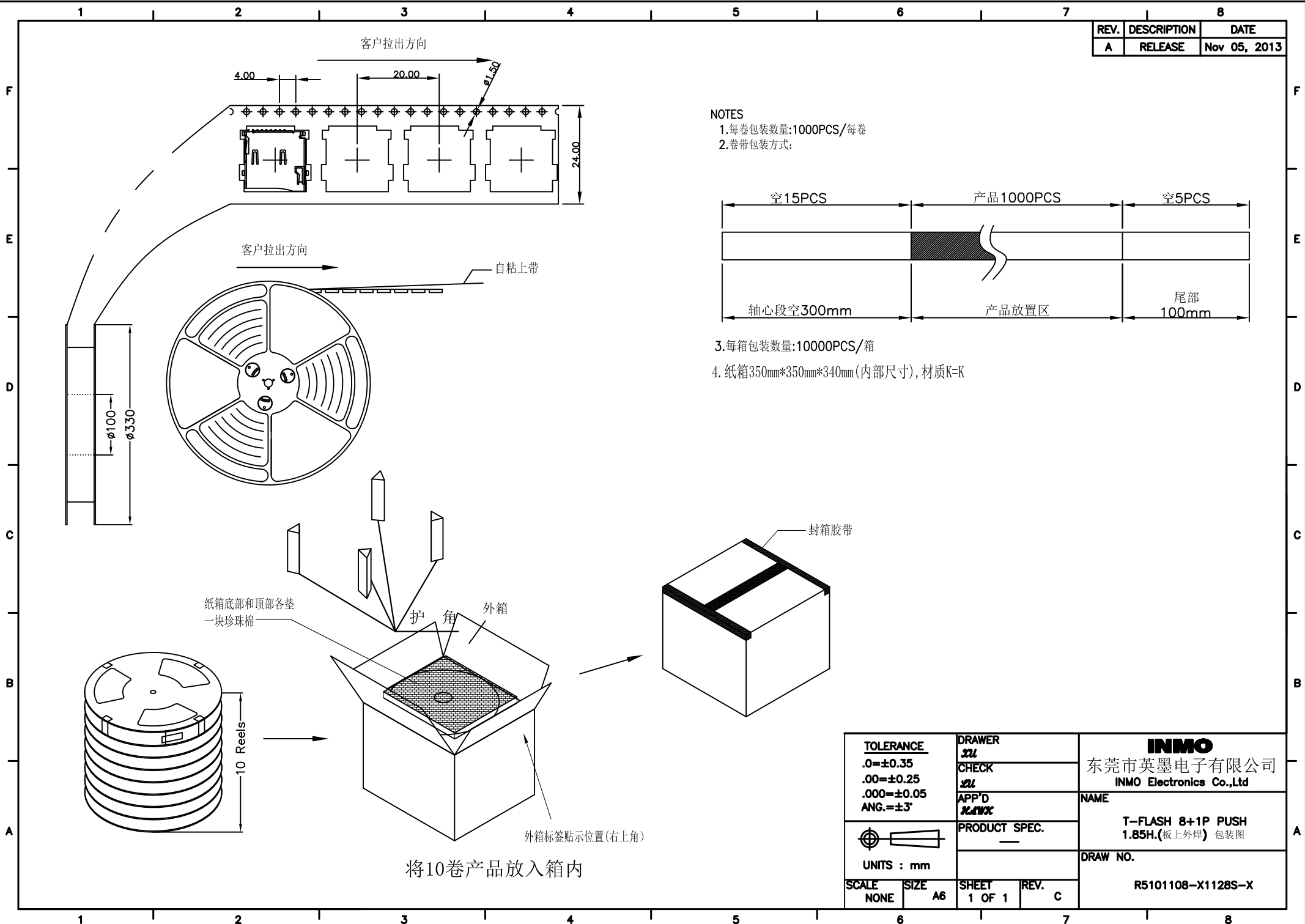
TOLERANCE .0=±0.35 .00=±0.25 .000=±0.05 ANG.=±3°	DRAWER 2L CHECK 2L APP'D 2L/WX
UNITS : mm	PRODUCT SPEC. —
SCALE NONE	SHEET 1 OF 1
SIZE A6	REV. C

INMO
东莞市英墨电子有限公司
INMO Electronics Co.,Ltd

NAME
T-FLASH 8+1P PUSH
1.85H.(板上外焊)

DRAW NO.
R5101108-X1128S-X

REV.	DESCRIPTION	DATE
A	RELEASE	Nov 05, 2013



NOTES

- 1.每卷包装数量:1000PCS/每卷
- 2.卷带包装方式:
- 3.每箱包装数量:10000PCS/箱
- 4.纸箱350mm*350mm*340mm(内部尺寸),材质K=K

TOLERANCE		DRAWER		INMO 东莞市英墨电子有限公司 INMO Electronics Co.,Ltd	
.0=±0.35		ZL			
.00=±0.25		CHECK		NAME T-FLASH 8+1P PUSH 1.85H.(板上外焊) 包装图	
.000=±0.05		ZL			
ANG.=±3'		APP'D		DRAW NO. R5101108-X1128S-X	
UNITS : mm		ZLWX			
		PRODUCT SPEC.			
SCALE	SIZE	SHEET	REV.		
NONE	A6	1 OF 1	C		